

## Kim-1

**Catalog Number:** 21110

**Gene Symbol:** Kim-1

**Description:** Anti-Kim-1 Rabbit Polyclonal Antibody

**Background:** Kidney injury molecule-1 (Kim-1) is a type 1 membrane protein with extracellular immunoglobulin and mucin domains. Kim-1 mRNA and protein are expressed at very low levels in normal kidney, but expression increases dramatically after injury in proximal tubule epithelial cells in postischemic rodent kidney and in humans during ischemic acute renal failure.

**Tested Applications:** ELISA, WB, IHC, IP

**Recommended Dilutions:**

ELISA 1:100-1:5000

WB 1:100-1:1000

IHC 1:50-1:100

**Concentration:** 0.2 mg/ml

**Host:** Rabbit

**Clonality:** Polyclonal

**Purity:** Purified from serum

**Format:** Liquid

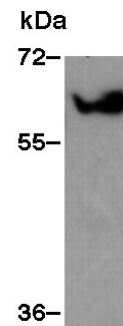
**Preservative:** No

**Constituents:** PBS (without  $Mg^{2+}$  and  $Ca^{2+}$ ), pH 7.4, 150 mM NaCl, 50% glycerol

**Species Reactivity:** Kim-1 antibody recognizes Kim-1 from vertebrates.

**Storage Conditions:** Store at  $-20^{\circ}C$ . Avoid freeze / thaw cycles

### Western blot:



WB: anti-Kim-1 pAb

HEK 293T cell lysate was used for western blot with anti-Kim-1 polyclonal antibody (Cat. # 21110).

FOR RESEARCH USE ONLY. NOT FOR DIAGNOSTIC APPLICATIONS